

SC Fast Fiber Optic Connector (Cold Connector)

Description

The fiber optic cold splice is used when two pigtails are butted together. Its main internal component is a precision v-shaped groove. After the two pigtails are dialed, the cold splice is used to realize the butt joint between the two pigtails. It is simpler and faster to operate and saves time than using a fusion splicer. SC fast fiber optic connectors adopt standard connector interfaces and have pre-ground optical fiber ferrules inside to facilitate on-site splicing.



Features

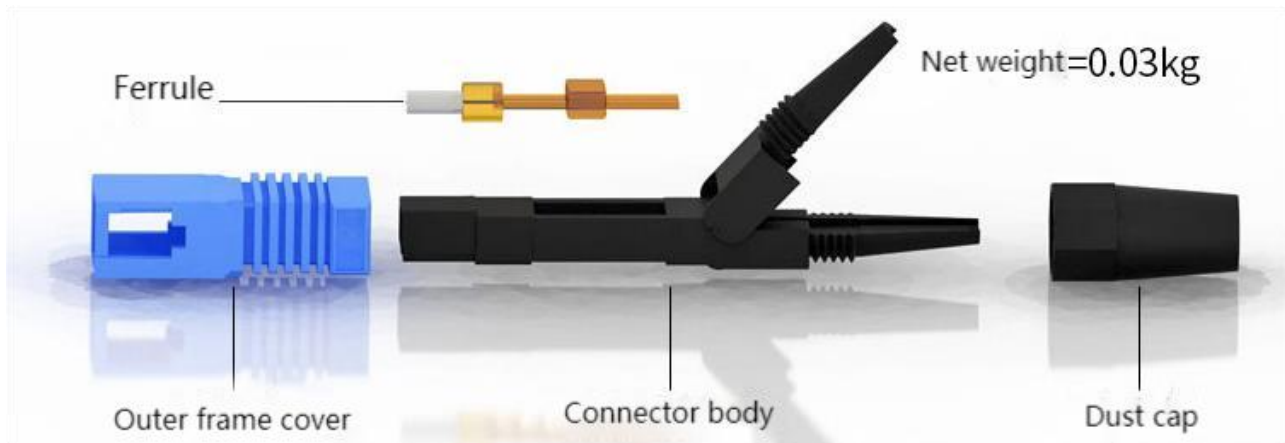
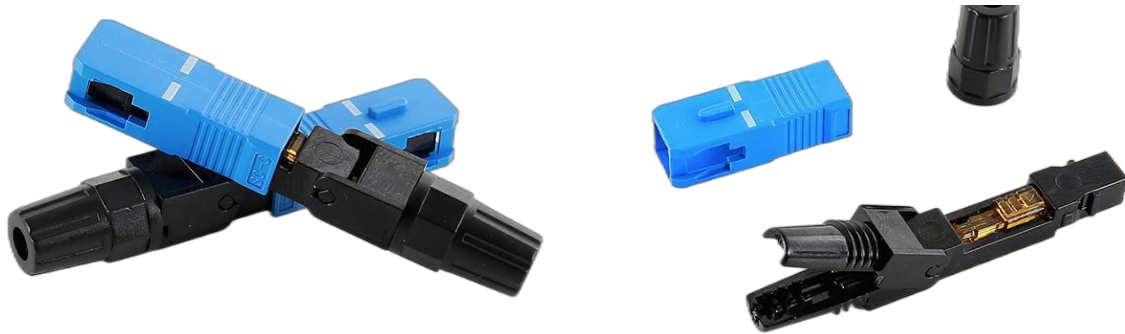
- High stability and reliability.
- Low insertion loss, high return loss.
- Excellent polishing standards.
- The end face geometric parameters comply with GR-326Core.
- $\Phi 2.0$, $\Phi 3.0$ butterfly optical cable

Applications

- Telecom network
- Cable TV
- Gigabit Ethernet
- Active or passive equipment terminals
- Industrial, medical and military



Product pictures



Product parameter

Category	Indicator requirements
End face requirements	400X meets IEC 61300-3-35
Insertion loss	≤0.50dB
Return loss	≥45dB(SM, PC); ≥55dB(SM, APC)
Repeatability	≤0.2dB
Adaptable fiber type	2.0mm/3.0mm butterfly optical cable
Operating temperature	-40℃ ~ +85℃

